



Report Export to MS Excel in Network Security

For Technical Support and Product Information:	
Phone:	+1-253-872-7788
Toll Free:	+1-800-915-7700
Fax:	+1-253-872-7904
E-Mail:	support@powertech.com
Corporate Office:	19426 68th Avenue South Kent, WA 98032



Report Export to MS Excel in Network Security

New options have been added to enable Network Security data to be easily exported for analysis using common PC tools such as Microsoft Excel.

Date: 3/02/05	PowerLock NetworkSecurity	Syst: ROBINSON
Time: 15:49:50	All Users - All Transactions	Menu: LNSD087USR
	NetworkSecurity Full License Version	User: BRENDAN

From date/time.. 02/23/05 00:00:00
To date/time.... 03/02/05 15:49:50

Detail, transaction, or summary (D/T/S)? D

Output type..... *IFS _____ *PRINT, *OUTFILE, *IFS

File..... _____ Create? _ Y=Yes, N=No

Library..... _____

Member..... _____ Option _ A=Add, R=Replace

IFS report name Jan All Users

F3=Exit F12=Cancel F13=Msgs F14=Submitted jobs F15=Spooled files

5250 20/034

The new *OUTFILE option directs the output to an iSeries data file using the filename and library specified on the screen.

When the *IFS option is selected, the report is output to a Comma Separated Value (.csv) file on the iSeries Integrated File System (IFS). The *IFS report output is placed in a directory (/home) in the location identified in the Report Output control file (PNSGRO), which is a data file in the PowerLock installation library (e.g., POWER510). The current default location for the files in the IFS is "/home".

The easiest way to access these reports on a PC is to map a drive to the IFS on the iSeries using iSeries Navigator, or alternatively you could use ftp to retrieve the files from the IFS. (Both of these options use network access servers that can be secured using PowerTech Network Security.)

● Open the .csv file in Microsoft Excel. (Make sure that you are browsing for "All Files" and not just "All Microsoft Excel Files"). The comma separated file will first appear as unformatted data in the Excel file, as follows:

	A	B	C	D	E	F	G	H	I	J	K	L	M	N	O	
	System Name	Serial Num	LPAR	Action	User Profil	Location	Server Typ	Server	Server Des	Function	Function C	Transactio	Transactio	Transactio	Job	Tr
1				Accept	DONY	010.000.00	Optimized	*CNTRLSF	License M	RLSLIC	Release lic	2003-09-02	9/2/2003	18.07.06.0	QZSCSRV	
2				Accept	DONY	010.000.00	Optimized	*CNTRLSF	License M	RLSLIC	Release lic	2003-09-02	9/2/2003	18.07.06.0	QZSCSRV	
3				Accept	DONY	010.000.00	Optimized	*CNTRLSF	License M	RQSLIC	Request lic	2003-09-03	9/3/2003	09.58.59.8	QZSCSRV	
4				Accept	DONY	010.000.00	Optimized	*CNTRLSF	License M	RQSLIC	Request lic	2003-09-03	9/3/2003	09.58.59.8	QZSCSRV	
5				Accept	DONY	010.000.00	Optimized	*CNTRLSF	License M	RQSLIC	Request lic	2003-09-03	9/3/2003	09.58.59.8	QZSCSRV	
6				Accept	GRFGG	010.000.00	Optimized	*CNTRLSF	License M	RQSLIC	Request lic	2003-09-02	9/2/2003	13.35.38.0	QZSCSRV	

● You can greatly enhance the usefulness of this data by running some simple MS Excel commands to clean up and chart this data. For your convenience, PowerTech has created some standard MS Excel macros that work on any Network Security report file. These macros can be downloaded from the PowerTech website: www.powertech.com or found on the PowerTech Network Security installation CD at the top level directory.

● Import the macros by opening the PowerlockMacros50 file in Excel and saving to a workbook of your choice. You may have to reduce your macro security level in MS Excel to Low or Medium (select **Menus ->Tools ->Macro ->Security**), or alternatively you can copy the source code of the macro to use in your own macros.

This file includes 3 macros:

- 1) **PowerLockFilter**: Automatically filters the data to make it easier for sorting and searching.
- 2) **PowerLockCharts**: Creates Pivot tables and charts from the report data.
- 3) **PowerLockSummary**: Organizes the summary data contained in .rpt files.

To run a Macro in Microsoft Excel:

- Select **Tools ->Macro ->Macros** from the Excel menus.
- Highlight the Macro name, and click on **Run** in the menu bar on the right.

Note: If you are unfamiliar with the use of Macros contact PowerTech support for assistance.

● Run the **PowerLockFilter** macro to make the report easier to read. The output should now look like this:

Action	User Profile	Location	Server Type	Server	Server Description	Function	Function Description
Accept	DONY	010.000.001.193	Optimized	(All)	License Management Central Server	RLSLIC	Release license
Accept	DONY	010.000.001.193	Optimized	(Top 10...)	License Management Central Server	RLSLIC	Release license
Accept	DONY	010.000.001.193	Optimized	*CNTRLSRV	License Management Central Server	RQSLIC	Request license
Accept	DONY	010.000.001.193	Optimized	*DDM	License Management Central Server	RQSLIC	Request license
Accept	GREGG	010.000.001.191	Optimized	*FILESRV	License Management Central Server	RQSLIC	Request license
Accept	GREGG	010.000.001.191	Optimized	*RMTRSRV	License Management Central Server	RQSLIC	Request license
Accept	GREGG	010.000.001.191	Optimized	*SQL	License Management Central Server	RQSLIC	Request license
Accept	GREGG	010.000.001.191	Optimized	*TRFCL	License Management Central Server	RLSLIC	Release license
Accept	GREGG	010.000.001.191	Optimized	*CNTRLSRV	License Management Central Server	RLSLIC	Release license
Accept	GREGG	010.000.001.191	Optimized	*CNTRLSRV	License Management Central Server	RQSLIC	Request license

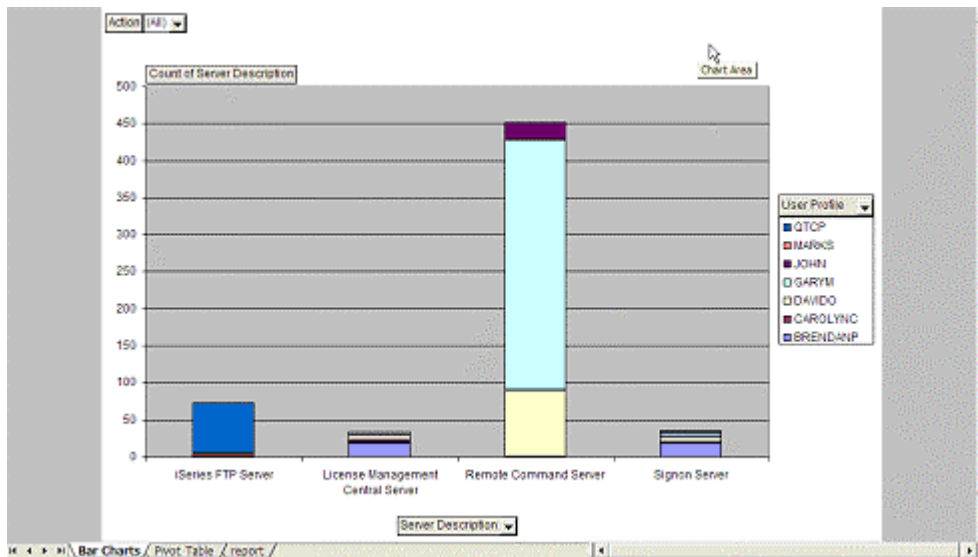
Data can now be filtered by selecting the item of interest from the drop down menu.

• Run the **PowerLockChart** macro to create charts and pivot tables of the report information.

The Macros create 2 new worksheets:

Bar Charts

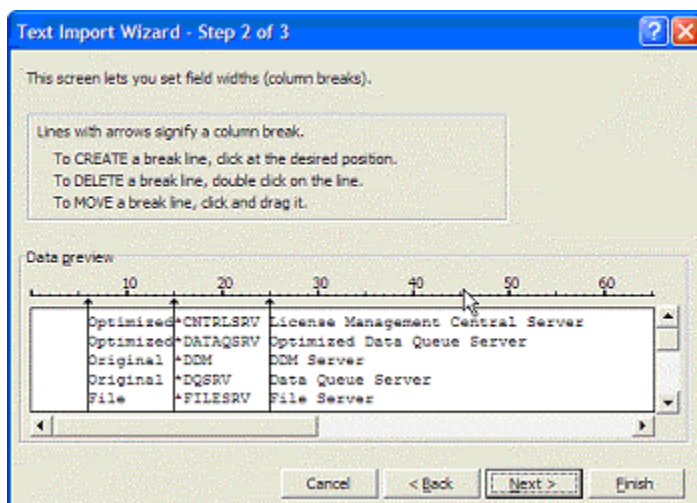
Bar Charts show a pivot chart of the data in the report. Click on the drop down arrows next to User Profile or Server Description to unselect items that you do not wish to display in the charts. You can use this chart to drill down to the information of interest.



Pivot Table

Pivot Table shows a numerical count of the transaction data in tabular form. Along with each *IFS report, Network Security also creates a .rpt file, which includes summary data in a fixed width format.

- Open this file in MS Excel.
- Select **Fixed Width** as the option to import.
- Create break lines at position **6**, **15**, and **25** as shown in the screenshot below:



- Click **Next** and **Finish** and run the **PowerLockSummary** macro. The Output will look like the following:

A	B	C	D	E	F	G	H
1	Status	Type	Server	Server Name	Function	Server / Function Name	Count
2	Optimized	*CNTRLSRV	License Management Central Server		License Management Central Server	0	
3	Optimized	*DATAQSRV	Optimized Data Queue Server		Optimized Data Queue Server	0	
4	Original	*DDM	DDM Server		DDM Server	0	
5	Original	*DQSRV	Data Queue Server		Data Queue Server	0	
6	File	*FILESRV	File Server		File Server	0	
7	Original	*LMSRV	License Management Server		License Management Server	0	
8	Original	*MSGFCL	Message Function		Message Function	0	
9	Optimized	*NDB	Native Database Request		Native Database Request	0	
10	Accept	Optimized	*RMTSRV	Remote Command Server		Remote Command Server	56
11	Accept	Optimized	*RMTSRV	Distributed program call	DSTPGMCALL	Distributed program call	40
12	Accept	Optimized	*RMTGRV	Remote Command	RMTCMD	Remote Command	15
13	Original	*RQSRV	Remote SQL Server		Remote SQL Server	0	
14	Optimized	*RTVDBLINF	SQL Retrieve Object Information		SQL Retrieve Object Information	0	
15	Optimized	*SQL	Database Server Initialization		Database Server Initialization	0	
16	Optimized	*SQLSRV	SQL Server		SQL Server	0	
17	Original	*TFRFL	File Transfer Server		File Transfer Server	0	
18	Original	*VPRT	Virtual Print Server		Virtual Print Server	0	
19	FTP	*FTPCIENT	iSeries FTP Client		iSeries FTP Client	0	
20	FTP	*FTPEXEC	FTP Execute Remote Command (RExec)		FTP Execute Remote Command (RExec)	0	
21	Accept	FTP	*FTPSERVER	iSeries FTP Server		iSeries FTP Server	18
22	Accept	FTP	*FTPSERVER	Set curr libdir (CD,CDUP,XCD,XCUD)	CHGCURLIB	Set curr libdir (CD,CDUP,XCD,XCUD)	5
23	FTP	*FTPSERVER	Create library or dir (MD,MKD,XMKD)		CREATELIB	Create library or dir (MD,MKD,XMKD)	0
24	FTP	*FTPSERVER	Delete file(s) (DELE)		DELETEFILE	Delete file(s) (DELE)	0
25	FTP	*FTPSERVER	Delete library or dir (RMD,XRMD)		DELETELIB	Delete library or dir (RMD,XRMD)	0
26	Accept	FTP	*FTPSERVER	Initialize session (new connection)	INIT	Initialize session (new connection)	7
27	Accept	FTP	*FTPSERVER	List files in libdir (LST,HLST)	LISTFILES	List files in libdir (LST,HLST)	1
28	Accept	FTP	*FTPSERVER	Send (put) file (APPE,STOR,STOU)	RCVFILE	Send (put) file (APPE,STOR,STOU)	2
29	FTP	*FTPSERVER	Execute remote command		RMTCMD	Execute remote command	0
30	FTP	*FTPSERVER	Rename file (RNFR, RNTG)		RNMFILE	Rename file (RNFR, RNTG)	0
31	Accept	FTP	*FTPSERVER	Receive (get) file (RETR)	RCVFILE	Receive (get) file (RETR)	2
33	Optimized	*RMSRQSRV	Network Print Server		Network Print Server	0	

- Network servers are displayed in **RED** and functions are displayed in **GREY**. The Count column shows the number of transactions against each server or function. Function data is only provided for servers that have recorded some traffic. This report is very useful in identifying servers and functions without traffic that are candidates for immediate lockdown.