



Real-Time Security Events from the System i (AS/400)

Monitor Your Most Critical Data

The System i (AS/400) runs some of the most critical business applications in your organization. PowerTech Interact allows you to monitor, capture, and send security-related events from the System i directly to your enterprise security monitor.

Simple Explanations

Interact takes raw security event data from the System i server and converts it into a meaningful format for security operations staff. Complex audit journal details are simplified into plain English statements such as:

"An invalid password was entered for user profile JOHN"
"System Value QSECURITY was changed from 40 to 30"

Filter Entries

You don't need to flood the network and fill up your Security Information Management (SIM) solution with every journal entry. Save disk space and bandwidth by selecting or omitting events based on key characteristics:

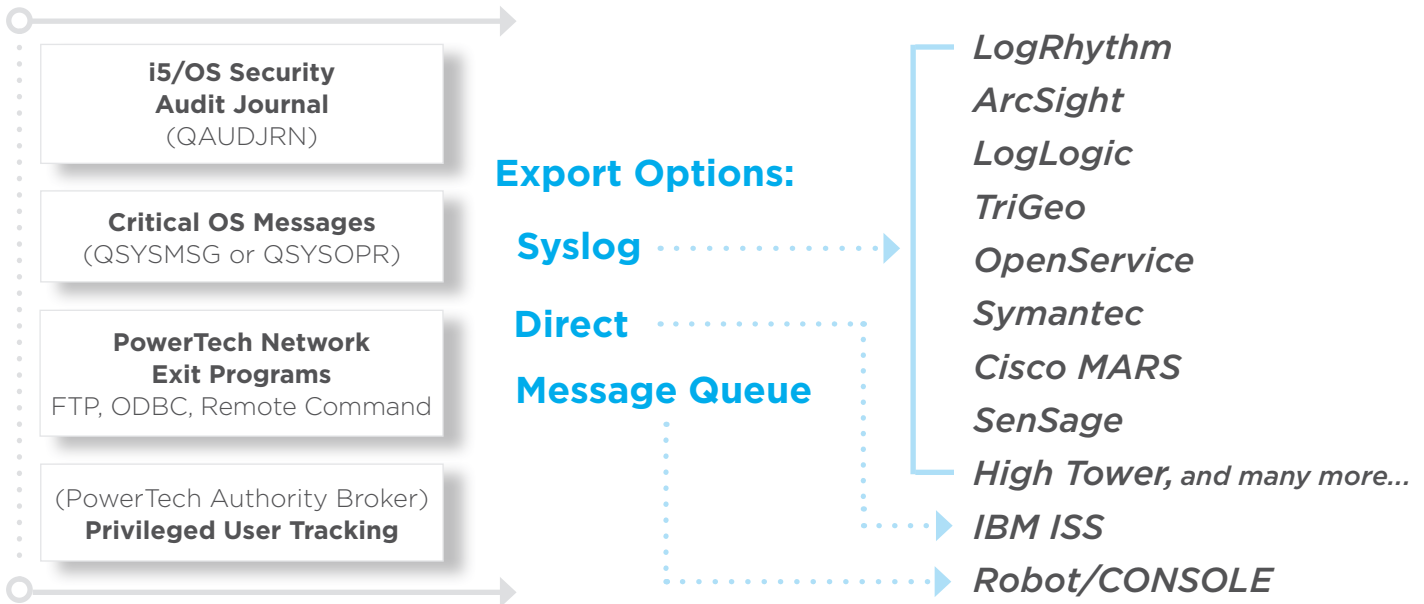
- Event Type
- User ID
- IP Address
- Time and Day of Week

Console Views

Your existing SIM consoles, or shareware, can read and interpret Interact's syslog output. And, Interact writes directly to IBM ISS Site Protector format.

Over 500 Event Types

Security Information Management



“Review logs for all system components daily.”

- Requirement 10
- Payment Card Industry Data Security Standard

Comprehensive Coverage

Monitor over 500 different events from a variety of sources.

Audit Journal Events

Interact captures audit journal events from the IBM security audit journal, QAUDJRN. Some of the common event types are:

- Authority Failures and Changes (AF, RA)
- Change to Authorization list (CA)
- Object Changes, Reads, Creates, Deletes, (CO, ZR, ZC, DO, OM, OR, OW)
- User Profile Changes (CP)
- User and Password Login Failures (PW)
- System Value Changes (SV)
- Intrusion Detection (IM)
- Service Tools Used (ST, DS)
- Commands (CD)
- Job Start, Stop, Change (JS)

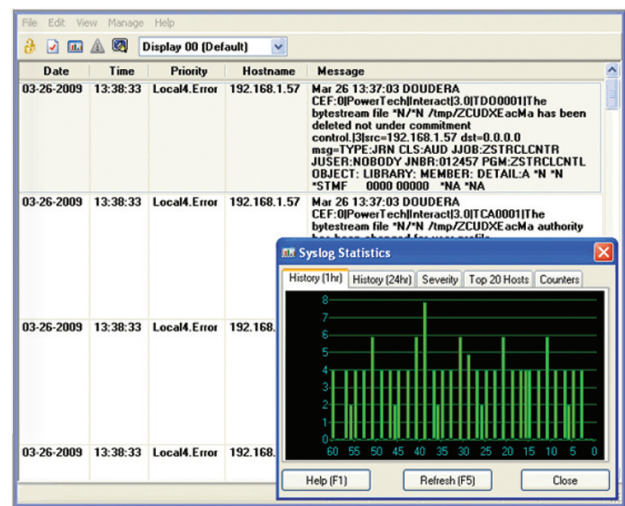
Network Transactions

Monitor network security events logged by PowerTech Network Security exit programs:

- 33 remote-access servers, including FTP, ODBC, Remote Command
- 190+ functions
- Accepted and rejected transactions
- Audit-only license available

About the PowerTech Group, Inc.

Because System i and AS/400 servers are used to host particularly sensitive corporate data, it is imperative that you practice proactive compliance security. As an IBM Advanced Business Partner with over 1000 customers worldwide, PowerTech understands corporate vulnerability and the risks associated with data privacy and access control.



IBM System i events in a Security Information Management (SIM) display.

Most SIM solutions today support syslog import. Interact provides real-time notification from the System i. Don't use an inadequate solution that requires a batch file transfer.

Critical Operating System Messages

Interact includes 66 distinct critical OS messages, including:

- Disabled Profiles
- Disk Space Limit Exceeded
- Audit Journal Changes

To learn more, visit www.powertech.com to find white papers, case studies, and product demonstrations, or call 800-915-7700 (USA) or 253-872-7788 to speak to a security solutions specialist.

